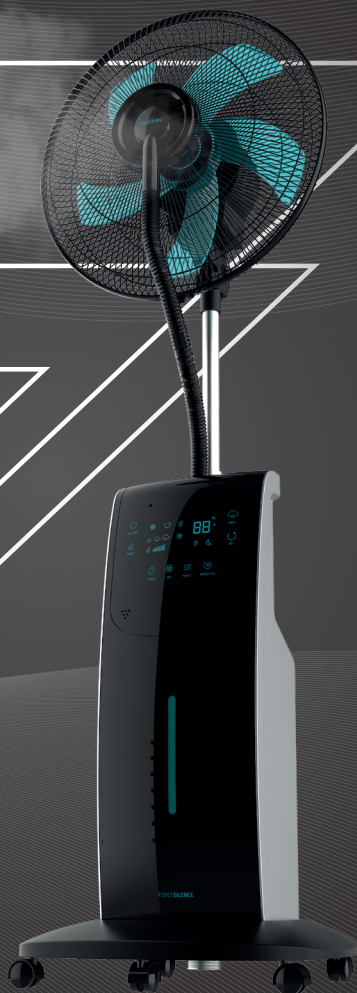


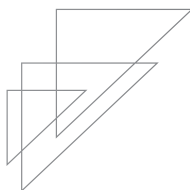
# cecotec

## FORCESILENCE 790 FRESHESSENCE IONIC

Mistfan



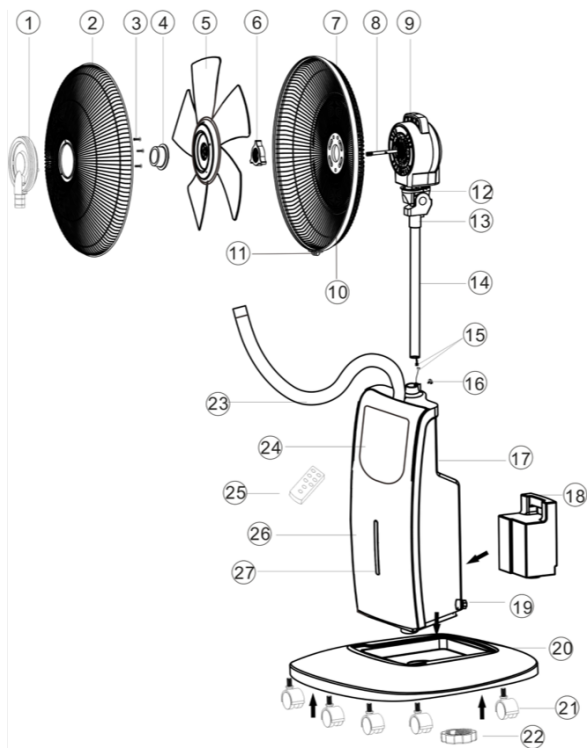
Instruction manual



## INDEX

1. Parts and components
2. Safety instructions
3. Producty assembly
4. Before use
5. Operation
6. Cleaning and maintenance
7. Technical specifications
8. Disposal of old electrical appliances
9. Technical support service and warranty

## 1. Parts and components



**EN**

1. Water tube connector
2. Front grid
3. Screw
4. Blade fixing element
5. Blades
6. Back-grid fixing element
7. Back grid
8. Motor shaft
9. Motor cover
10. Screw-type sealing ring
11. Screw-type sealing ring fastener
12. Motor holder
13. Mist fan fixing element
14. Main holder
15. Connection cables
16. Screw
17. Main body's back part
18. Water tank
19. Water-drain outlet
20. Base
21. Castors
22. Base fixing element
23. Water/mist tube
24. Control panel
25. Remote control
26. Main body's front part
27. Water indicator

Read these instructions thoroughly before using the appliance. Keep this instruction manual for future reference or new users.

## **2. SAFETY INSTRUCTIONS**

- Make sure that the mains voltage matches the voltage stated on the rating label of the appliance and that the wall outlet is grounded.
- Check the power cord regularly for visible damage. If the cord is damaged, it must be replaced by the official Technical Support Service of Cecotec in order to avoid any type of danger.
- Keep packaging material out of the reach of children in order to avoid accidents.
- Do not plug the device to multiple sockets.
- The device must not be switched on using external timers or other remote-control devices which are not specified in this manual.
- Place and operate the device on a flat and stable surface.
- Make sure the appliance and its cord are in good conditions before operating it.
- Make sure the product is switched off and disconnected from the power supply before removing the guard, filling or cleaning.
- Do not use the appliance for other than its intended use; any use not complying with the instructions contained in the manual is considered inappropriate and dangerous. Cecotec is not responsible for possible damages caused by the inappropriate or unreasonable use.
- The assembly of the device must be carried out according to the indications on this instruction manual. Any wrong procedure may cause damage to persons, animals or objects, for which the manufacturer cannot be considered responsible.

- Do not operate the product in the presence of flammable substances such as gas, vapour, mist or dust.
- Do not carry out any reparation task by yourself, instead contact the Technical Support Service of Cecotec.
- DO NOT use or store the device near heat sources (heaters, stoves etc.).
- Do not immerse the cord, plug, or the appliance in water or any other liquid, nor expose the electrical connections to water. If the device falls into water, do not touch it and disconnect it from the power supply immediately.
- The appliance is not intended to be used by children under the age of 8. It can be used by children over the age of 8, as long as they are given continuous supervision.
- This appliance can be used by children aged 8 and above, and persons with reduced physical, sensory or mental capabilities or lack of experience and knowledge, as long as they have been given supervision or instruction concerning the use of the appliance in a safe way and understand the hazards involved.
- Supervise young children to make sure that they do not play with the appliance. Close supervision is necessary when the appliance is being used by or near children.
- This appliance is designed only for domestic use. It is not appropriate for commercial or industrial use.
- This appliance is designed only for domestic use. It is not appropriate for commercial or industrial use.

### **3. PRODUCT ASSEMBLY**

1. Install the five castors on the base.
2. Install the main body to the base and use the base fixing element to fix the base tightly.
3. Connect the connection cables, place them inside the main body and use the screw to fix it.
4. Place the back grid in its position and use the back-grid fixing element to install it on the motor holder.
5. Install the blades on to the motor shaft and screw the blade fixing element to ensure the blades are properly attached.

## 4. BEFORE USE

**Note:** before using the device for the first time, make sure to remove any label or protective sheet which affects its proper functioning.

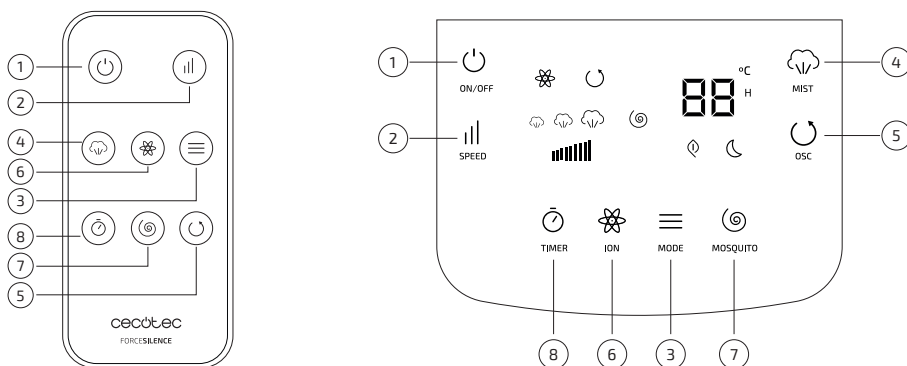
- Remove any packaging material.
- Make sure the appliance is switched off and disconnected from the power supply before installing or assembling it.
- The appliance must be used with its base fitted.
- Install the water tube connector on the front grid and use the screws to fix it tightly.
- Put the front and back grid together, join them with the help of the screw-type sealing ring and close it with the fastener.
- Place the fan on a dry and stable surface and insert the plug on the power supply. The unit will emit a short "BEEP" sound indicating it is properly connected. For your convenience, the unit can be operated by using the control panel in the main body or by using the remote control provided.

## 5. OPERATION

**WARNING:** Make sure the product is unplugged from the power supply before filling or refilling the water tank.

- Only use water in the water tank. Do not add any chemicals, oils or other substances.
- Only use cold or lukewarm water in the water tank. Water used must not be warmer than 40°C.

### CONTROL PANEL AND REMOTE CONTROL



1. On/off button
2. Speed button

3. Mode button
4. Mist-fan function
5. Oscillation function
6. Ionizer function
7. Mosquito-repellent function
8. Timer

## **COMPONENTS**

### **Water tank**

- Remove the water tank by pulling from it upwards.
- Unscrew the lid and fill with water.
- Screw the lid and place the water tank back in its position.
- Warning: do not use water above 40 °C.

### **Ice pack**

- Turn the appliance off and unplug it from the power supply.
- Remove the water tank and take out the ice pack from appliance.
- Put the ice pack inside the freezer.
- After freezing, put the ice pack inside the water tank in order to lower the temperature.
- It can be reused.

### **Aromatic oil tank**

- Take the aromatic oil tank out, located on the back part of the main body.
- Introduce several drops of aromatic oil in the tank and place it back in its position.
- The aromatic oil will evaporate and the mist fan will spread it around the whole room.

## **BUTTONS**

### **1. On/Off button**

- Press this button once to turn the machine on. The light indicator will turn on too.
- Press this button a second time. The mist fan will operate at low wind speed by default. The panel will display the room temperature.
- Press this button a third time to turn the device off. All lights will turn off too.

### **2. Speed button**

- Press this button to set air speed at medium level.
- Press this button a second time to set high air-speed level.
- Press this button a third time to set air speed at low level again.



### 3. Mode button

- This device includes 3 different modes:
  1. ECO: the mist fan imitates real wind by switching from strong to soft wind.
  2. Sleep: the mist fan operates half an hour switching from strong to soft natural wind, then it switches to medium natural wind for the second half an hour and then switches to soft natural wind for the rest of the preset time.
  3. Normal: the mist fan operates in the selected mode (low, medium or high speed).

## FUNCTIONS

### 4. Mist function

- This function can be operated by itself or together with the fan.
- Press this button once, the product will operate at low power level.
- Press again to increase the power level of mist to medium.
- Press a third time to increase mist power level to high.

**Note:** while the mist function is activated, the indicator light on the main body will turn on blue. If water needs to be refilled, the indicator light will turn red.

### 5. Oscillation function

- This function can be activated for the air and mist to be spread over a 75-degree range.
- Press the OSC button to activate this function. The light indicator will turn on.
- Press again to deactivate this function.

### 6. Ionizer function

- The device generates negative ions that cause pollen, dust and pet hair to fall out from air, creating a more pleasant environment. To activate it, press the ion button, to deactivate it press it again. The light will light up green while it is activated.

### 7. Mosquito-repellent function

- This function can be operated by itself or together with the fan.
- Place the mosquito-repellent tablet (not included with the product) in its compartment, located on the back part of the product.
- Press the mosquito button to activate it, the red-light indicator will turn on.
- Press it again to deactivate the function, the light indicator will turn off.

## WARNINGS:

- Turn off the product and wait for 10 minutes before replacing the mosquito repellent to avoid burns or electric shocks.
- Avoid eyes and mouth contact with the mosquito repellent. In case of contact, seek medical care immediately.

### 8. Timer

The mist fan can be scheduled up to 12 hours. Once the preset time has elapsed, the product turns off automatically.

To set the timer for 1 hour, press the timer button once. Press the same button again for each one more hour you desire to set it. After pressing it 12 times (the display will show the number of scheduled hours) press again to cancel the timer. Once the timer has been cancelled, the display will show the room temperature again. The display will show the remaining time scheduled and will decrease in 1-hour intervals.

## 6. CLEANING AND MAINTENANCE

- Do not immerse the device in water or splash it with any other liquid.
- Do not use solvents or any other chemical product for cleaning it.
- If it is not going to be used for a long time, store the device in a dry place.
- Use a soft dampened cloth to clean the device before storing it for long periods of time. If necessary, disassemble the grid and remove the fan.
- Remove the water tank and clean it with lukewarm water.
- Before placing the water tank in the unit, make sure it is completely dry.
- Drain water out of the unit by placing a container underneath the water drain and allow it to empty.

## 7. TECHNICAL SPECIFICATIONS

Model: ForceSilence 790 FreshEssence Ionic

Product reference: 05229

Power: 90 W

Voltage and frequency: 220-240 V~50/60 Hz

Made in China | Designed in Spain

## 8. DISPOSAL OF OLD ELECTRICAL APPLIANCES



The European directive 2012/19/EU on Waste Electrical and Electronic Equipment (WEEE), specifies that old household electrical appliances must not be disposed of with the normal unsorted municipal waste. Old appliances must be collected separately, in order to optimize the recovery and recycling of the materials they contain, and reduce the impact on human health and the environment.

The crossed out "wheeled bin" symbol on the product reminds you of your obligation to dispose of the appliance correctly. If the product has a built-in battery or uses batteries, they should be removed from the appliance and disposed of appropriately.

Consumers must contact their local authorities or retailer for information concerning the correct disposal of old appliances and/or their batteries.

## 9. TECHNICAL SUPPORT SERVICE AND WARRANTY

This product is under warranty for 2 years from the date of purchase, as long as the proof of purchase is submitted, the product is in perfect physical condition, and it has been given proper use, as explained in this instruction manual.

The warranty will not cover the following situations:

- The product has been used for purposes other than those intended for it, misused, beaten, exposed to moisture, immersed in liquid or corrosive substances, as well as any other fault attributable to the customer.
- The product has been disassembled, modified, or repaired by persons, not authorised by the official Technical Support Service of Cecotec.
- Faults deriving from the normal wear and tear of its parts, due to use.

The warranty service covers every manufacturing defects of your appliance for 2 years, based on current legislation, except consumable parts. In the event of misuse, the warranty will not apply.

If at any moment you detect any problem with your product or have any doubt, do not hesitate to contact Cecotec Technical Support Service at **+34 963 210 728**.



[www.cecotec.es](http://www.cecotec.es)

Grupo Cecotec Innovaciones S.L.  
C/de la Pinadeta s/n, 46930  
Quart de Poblet, Valencia, Spain